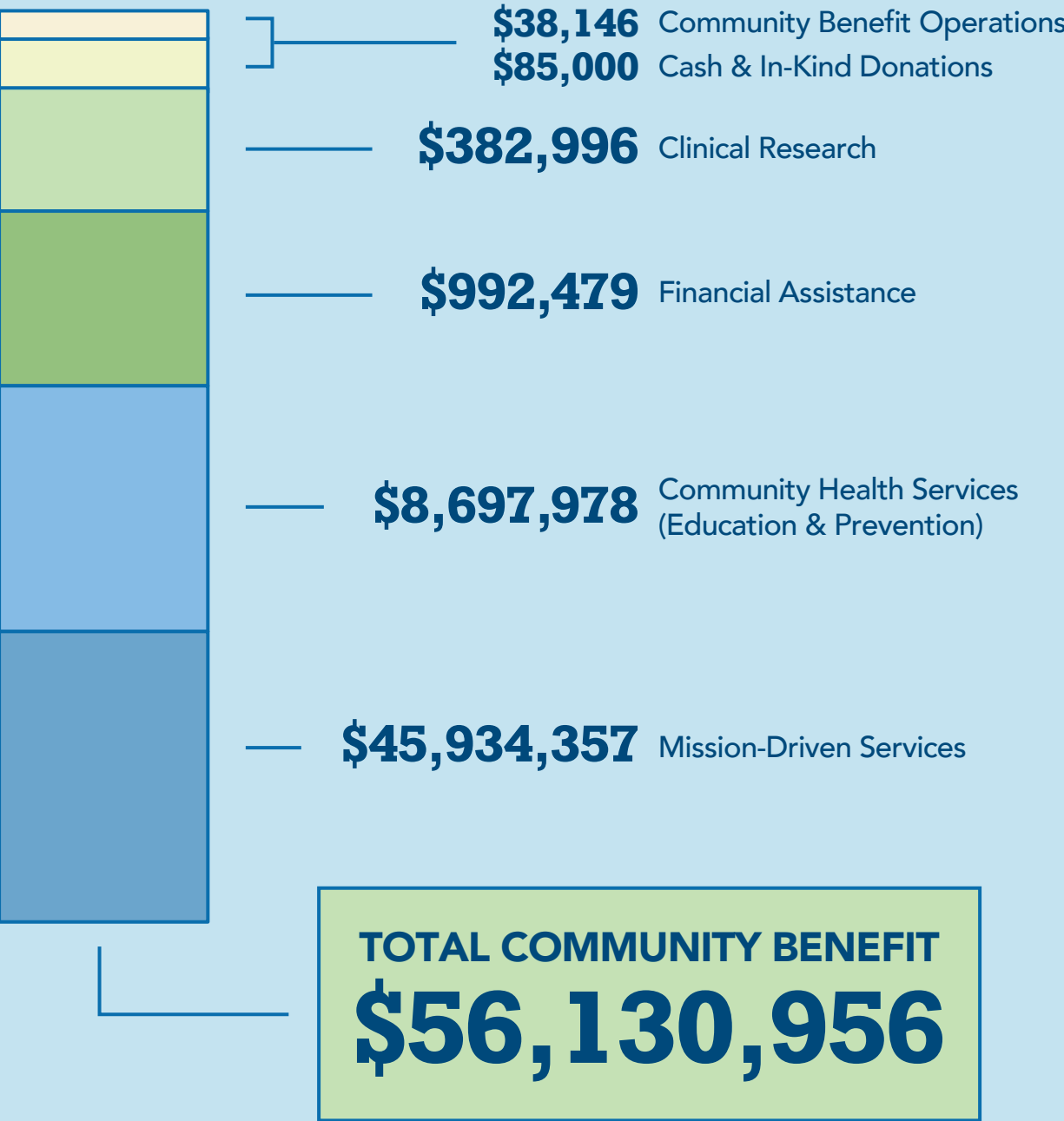


Our Mission

To positively impact the well-being of every individual in our community.



DOLLARS FREDERICK HEALTH INVESTED IN OUR COMMUNITY



SERVING FREDERICK COUNTY & BEYOND



~16,000
ANNUAL HOSPITAL ADMISSIONS

170-200 VISITS PER DAY
EMERGENCY DEPARTMENT
RANKING 4TH BUSIEST
of ~47 Emergency Departments in Maryland

2,400
BABIES DELIVERED

INPATIENT SURGERIES
5,000
OUTPATIENT SURGERIES
2,000

5 ROBOTIC SURGERY SYSTEMS
Including the only DaVinci 5 system in the state of Maryland

Partnered with Johns Hopkins in NICU and Interventional Cardiology

GIVING BACK

232
ACTIVE VOLUNTEERS

15
SERVICE AREAS

37,000+ HOURS
Donated in 2024

\$245,000
Raised through the Gift Shop & Select Seconds thrift shop, run solely by Frederick Health volunteers

650+
HOSPICE SUPPORT SERVICES
45 CHILDREN AT CAMP JAMIE
605 SCHOOL SESSIONS

How We Care

Delivering complete care with innovation, compassion, and expertise.

HOW WE ADVANCE PATIENT-CENTERED PROGRAMS

Breast Center

A multidisciplinary team guides patients through advanced breast cancer evaluation and treatment.

Precision Medicine & Genetics

Personalizing care through genetic insights to inform disease prevention and treatment.

Cancer Care

Delivering state-of-the-art cancer care, access to clinical trials, and support services for patients and families.

Stroke Smart Frederick County

Empowering residents to recognize strokes quickly and seek help sooner, improving outcomes county-wide.

Hospital Observation Unit

Short-term monitoring and treatment for Emergency Department patients help doctors make quicker decisions and reduce wait times.

Who We Are

Frederick Health is Frederick County's largest not-for-profit organization and largest non-governmental employer.

WE ARE MADE UP OF:
Frederick Health Hospital, Frederick Health Medical Group, Frederick Health Employer Solutions, Frederick Health Home Care, and Frederick Health Hospice.

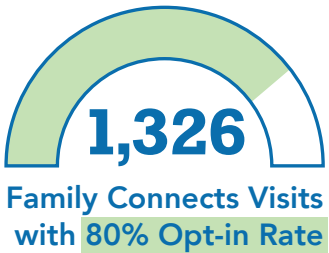
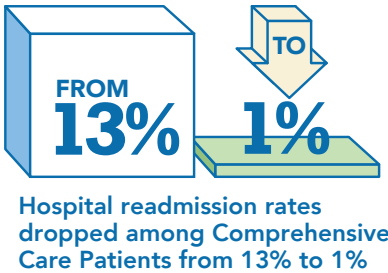
YOUR COMMUNITY OF CARE SNAPSHOT

- 261 Hospital Beds
- 71,000 Emergency Department Visits
- 17 Outpatient Facilities
- 10 Primary Care Locations
- 4 Urgent Care Centers
- 10 Outpatient Labs
- 7 Physical Therapy & Sports Rehab Locations
- 20+ Medical & Surgical Specialties
- 207+ Employed Providers
- 94 Primary Care Providers

Who We Serve

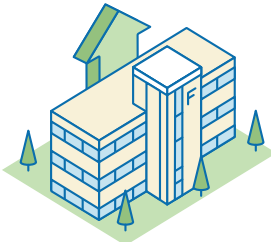
Caring for people of every age and walk of life across Frederick County and beyond, delivering the right care, in the right place, at the right time.

SERVING FREDERICK COUNTY & BEYOND



Named MDPCP
Top Clinical Transformation Organization for Retained Earnings (2024)

37K
MAMMOGRAMS PERFORMED



PATIENTS SERVED
5,818
(At the Breast Center)

Who We Employ

Driving the local economy and delivering care by, and for, the people who call this community home. We're Frederick County's largest non-government employer. Here's what that looks like:

3,378 Team Members	98 Physicians	872 New Hires
2,554 Full-Time Employees	109 Advanced Practice Providers (APPs)	72% of Employees Reside in Frederick County <small>(With others in nearby regions MD, PA, WV)</small>

Proud to be Maryland's only independent hospital with the prestigious Magnet® designation for nursing excellence.

Continuing Our Commitment to Frederick County

Our FY24 efforts exemplify a deep commitment to enhancing community health through accessible, equitable, and compassionate care. From expanding primary care to supporting newborn families, advancing early detection programs, and engaging in meaningful community dialogue, our goal is to continue to drive positive health outcomes and reinforce our role as the trusted health partner Frederick County deserves.

LOOKING AHEAD

In the year to come, we're excited to:

- Grow our team to meet the evolving and diverse needs of the people we serve.
- Invest in innovation, from technology to facilities, to make great care even more accessible.
- Support community health priorities, including food access, mental health awareness, and racial equity, as identified through our Community Health Needs Assessment (CHNA).



JULY 1, 2023–JUNE 30, 2024

FY24 Community Impact

