

Breast Cancer

Breast cancer is the **2nd leading cause of cancer death** in women in the United States behind lung cancer.

Screening and prevention

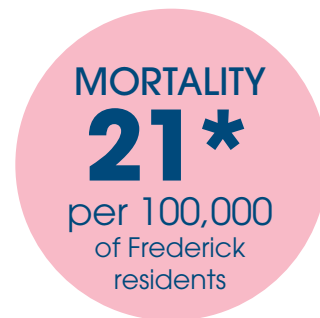
The **American College of Radiology and Society of Breast Surgeons recommends** that women at average risk of breast cancer should receive annual screening mammograms starting at age 40.

Monthly breast self-exam and annual physical exams by a doctor are **essential parts of an overall breast cancer screening strategy.**

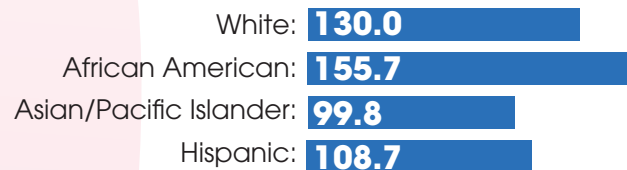
Know the symptoms!

- A new lump or mass
- Swelling of all or part of a breast (even if no distinct lump is felt)
- Skin irritation or dimpling (sometimes looking like an orange peel)
- Breast or nipple pain
- Nipple retraction (turning inward)
- Redness, scaliness, or thickening of the nipple or breast skin
- Nipple discharge (other than breast milk)

Who is affected?



Incidence in Frederick County, per 100,000



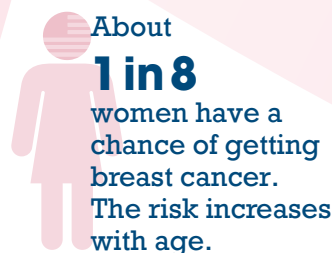
In Frederick County there were **956 new cases** of female Breast Cancer from 2012-2016.

For every 100,000 women, **132 Breast Cancer cases were reported.**

Over those years, there were **151 women who died** of Breast Cancer.

For every 100,000 women in Frederick County, **21 died of Breast Cancer.**

Who is at risk?



For more information, visit
FrederickHealth.org/BreastHealth